

AGENDA

Meeting: BRADFORD ON AVON AREA BOARD
Place: Cereal Partners UK, Conference Facility, Staverton, Wiltshire, BA14 6PG
Date: Wednesday 11 May 2011
Time: 7.00 pm

Including the Parishes of Bradford on Avon, Holt, Limpley Stoke, Monkton Farleigh, South Wraxall, Staverton, Westwood, Wingfield and Winsley

The press and public are invited to attend the meeting

The Area Board welcomes and invites contributions from members of the public

ARRIVE EARLY! Refreshments will be available

Please direct any enquiries on this Agenda to Kevin Fielding , on 01249 7706612 or email kevin.fielding@wiltshire.gov.uk

or Peter Dunford (Bradford on Avon Community Area Manager), direct line 01225 713060 or (email) peter.dunford@wiltshire.gov.uk

All the papers connected with this meeting are available on the Council's website at www.wiltshire.gov.uk

Press enquiries to Communications on direct lines (01225) 713114 / 713115.

Wiltshire Councillors

Cllr Malcolm Hewson, Bradford on Avon
South (Chairman)
Cllr Rosemary Brown, Bradford-on-Avon
North (Vice Chairman)

Cllr Trevor Carbin, Holt & Staverton
Cllr Linda Conley, Winsley &
Westwood

Items to be considered	Time
<p>1. Chairman's Welcome and Introduction</p>	7.00pm
<p>2. Apologies for Absence</p>	
<p>3. Declarations of Interest</p> <p>Councillors are requested to declare any personal or prejudicial interests or dispensations granted by the Standards Committee</p>	
<p>4. Minutes (Pages 3 - 16)</p> <p>To approve and sign as a correct record the minutes of the meeting held on 16 March 2011</p>	
<p>5. Chairman's Announcements and Updates (Pages 17 - 28)</p> <ul style="list-style-type: none"> i) Community Area Transport Working Group – report of meeting held on 18 April to consider priorities and progress with minor capital improvement works ii) Big Society, Localism and What it Means for You – report of seminar held on 6 April iii) Possible transfer of asset: Culver Close, Bradford on Avon – roundtable meeting to be held between the Town Council and Wiltshire Council on 31 May 2011 iv) Section 106 contributions to Play Parks in Bradford on Avon – roundtable meeting to be held between Wiltshire Council, Bradford on Avon Town Council and the Friends of Barton Farm on 6 June 2011 v) Partner updates from Wiltshire Police, Wiltshire Fire and Rescue and NHS Wiltshire 	
<p>6. Focus on Staverton (Pages 29 - 30)</p> <p>Steve Ford, Factory Manager, Cereal Partners UK to give welcome and profile the company.</p>	

Steve Figures, Chairman of Staverton Parish Council, to summarise local achievements and issues for the future.

7. **Digital Inclusion - superfast broadband survey** (Pages 31 - 36)

Ian Baker, ICT/ E-Learning Advisor, Wiltshire Council.

Speaker from Bradford online community.

Electronic voting to gather the views of the meeting on issues of digital inclusion and the business and community needs of superfast broadband.

8. **Bradford on Avon Sports Festival, 15-22 May**

Isabel Martindale, on behalf of the Organising Committee, to provide details of the festival events.

9. **Royal United Hospital NHS Trust - Foundation Trust application**

Tim Edmonds, Communications Manager RUH Bath, to discuss the implications of the application for trust status.

10. **Issues Update**

Peter Dunford, Community Area Manager, to summarise current live issues and progress made in finding solutions.

11. **Community Area Grants** (Pages 37 - 52)

- a) End of Year Summary 2010/11 and Review of Community Area Grants Scheme for 2011/12
- b) Councillors will consider 2 applications seeking 2011/2012 Community Area Grant Funding:
 - i) Play Area Footpath, School Lane, Staverton - Staverton Parish Council requesting £ 980
 - ii) Bradford on Avon Arts Festival 2011 – requesting £ 1,500

Copies of the completed application forms and grant application packs for the Community Area Grants Scheme are available from the Community Area Manager or electronically at:

<http://www.wiltshire.gov.uk/areaboardscommunitygrantsscheme.htm>

12. **Meeting Evaluation**

Feedback using electronic voting.

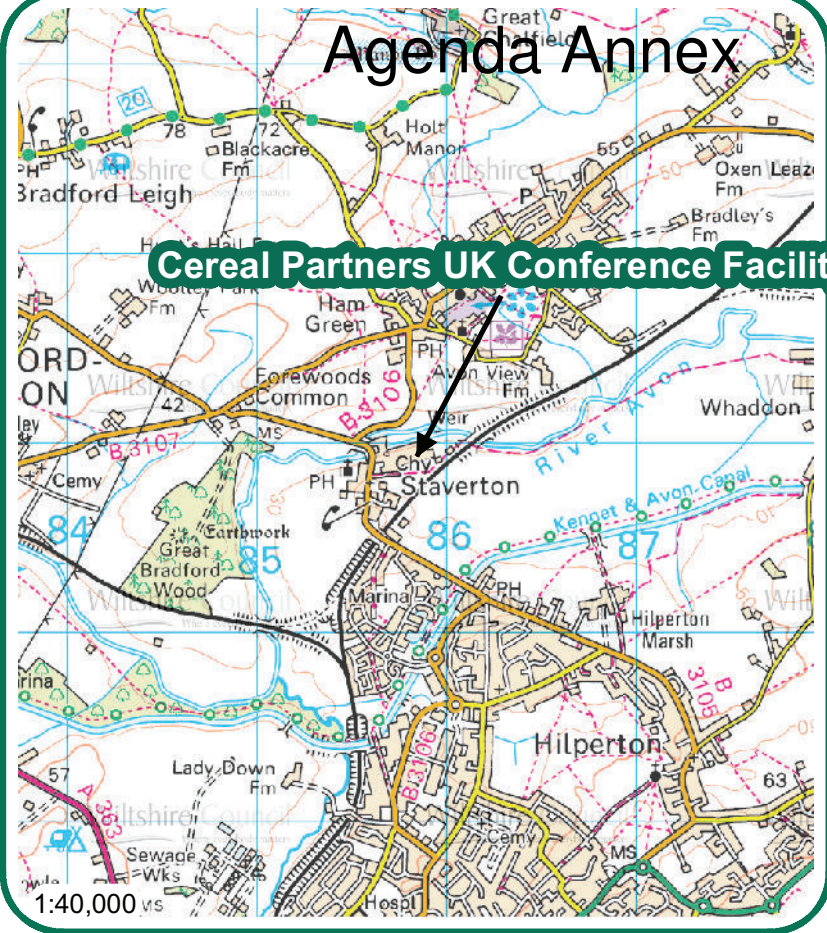
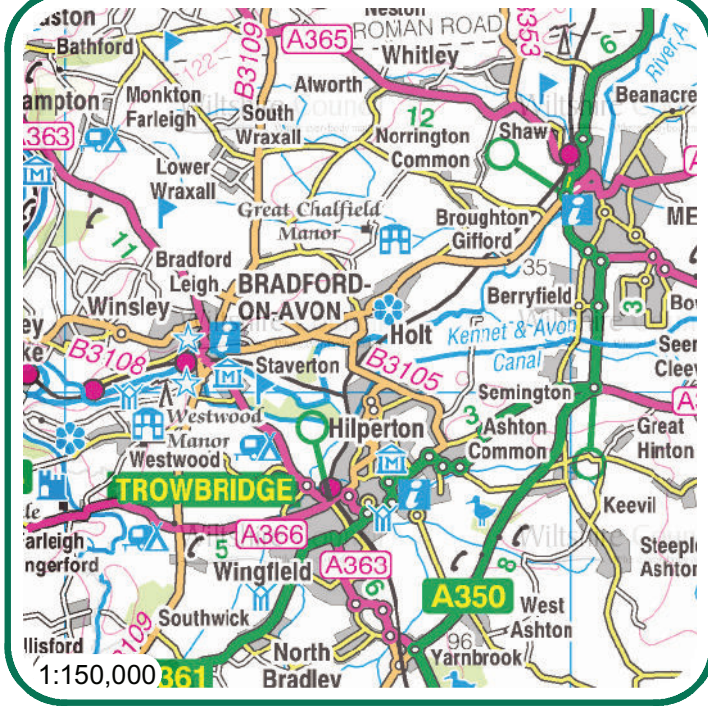
13. **Future Area Board Meetings**

Wednesday 20th July – Westwood Social Club.

Wednesday 21st September – St Margaret’s Hall, Bradford on Avon.

Wednesday 23rd November – Holt Village Hall.

9.00pm



Agenda Annex

Cereal Partners UK Conference Facility

Cereal Partners UK Conference Facility
Stoverton
Wiltshire
BA14 6PG

Wiltshire Council
 Where everybody matters



Cereal Partners UK Conference Facility

This page is intentionally left blank

MINUTES

Meeting: BRADFORD ON AVON AREA BOARD
Place: St Margaret's Hall, St Margaret's Street, Bradford on Avon BA15 1DE
Date: 16 March 2011
Start Time: 7.00 pm
Finish Time: 10.45 pm

Please direct any enquiries on these minutes to:

Kevin Fielding ,Tel: 012225 776655 ext: 115 or (e-mail) kevin.fielding@wiltshire.gov.uk

Papers available on the Council's website at www.wiltshire.gov.uk

In Attendance:

Wiltshire Councillors

Cllr Malcolm Hewson (Chairman), Cllr Rosemary Brown (Vice Chairman),
Cllr Trevor Carbin and Cllr Linda Conley

Wiltshire Council Officers

Peter Dunford – Community Area Manager
Kevin Fielding – Democratic Services Officer
Sharon Davies – Service Director, Children and Families
Damian Haasjes – Head of Voice and Influence
Kath Brownlee – Youth Development Co-ordinator

Town and Parish Councillor

Bradford on Avon Town Council – Vicky Landell Mills, Isabel Martindale & Gwen Allison
Holt Parish Council – Martin Moyes
Limpley Stoke Parish Council – Simon Coombe
Westwood Parish Council – Terry Biles
Wingfield Parish Council – Alan Mines & Allan Spreadbury
Winsley Parish Council – John Allison

Partners

Wiltshire Police – Seargent Chris Hams
Bradford on Avon Community Area Partnership – David Gregory & Jim Lynch

Members of Public in Attendance: 20
Total in attendance: 68

<u>Agenda Item No.</u>	<u>Summary of Issues Discussed and Decision</u>
1.	<p><u>Chairman's Welcome and Introduction</u></p> <p>The Chairman welcomed everyone to St Margaret's Hall, and introduced the Wiltshire councillors who made up the board, as well as Sharon Davies, (Service Director), the Community Area Manager and the Democratic Services Officer.</p> <p>All town, parish and partner representatives in attendance were welcomed by the Chairman.</p>
2.	<p><u>Apologies for Absence</u></p> <p>Apologies were received from Matthew Midlane, (Monkton Farleigh Parish Council), Jo Howes (NHS Wiltshire), Insp David Cullop (Wiltshire Police) and Mike Franklin (Wiltshire Fire & Rescue Service).</p>
3.	<p><u>Declarations of Interest</u></p> <p>Agenda Item No.10i Community Area Grant – Bradford on Avon Town Council. Cllr Malcolm Hewson – Prejudicial interest, member of Bradford on Avon Town Council, would leave the room when this application was discussed and voted on.</p> <p>Agenda Item No.10iii Community Area Grant – Bradford on Avon Town Council/Bradford on Avon Development Trust/Climate Friendly Bradford. Cllr Malcolm Hewson – Prejudicial interest, member of Bradford on Avon Town Council, would leave the room when this application was discussed and voted on.</p> <p>Agenda Item No.11ii Performance Reward Grant – Bradford on Avon Town Council. Cllr Malcolm Hewson – Prejudicial interest, member of Bradford on Avon Town Council, would leave the room when this application was discussed and voted on.</p>
4.	<p><u>Minutes</u></p> <p>Decision</p> <p>The minutes of the meeting held on the 19 January 2011 were approved and signed as the correct record.</p>

5.

Chairman's Announcements and Updates

The following announcements contained in the pack were mentioned briefly:

Community Area Transport Group (CAT-G)

Meeting to consider priorities and progress with minor capital improvement works – a date to meet in April to be agreed with parish reps at the end of the evening. (Post meeting Note: the CAT-G was set for Monday 18 April, 2pm at priory Barn, Newtown, Bradford on Avon)

Seminar - Big Society, Localism and What it Means for You

Wednesday 6 April, St Margaret's Hall, Bradford on Avon at 6.30pm – open to all.

Localism Bill - Proposed Changes to Arrangements Governing the Conduct of Councillors

The Government's Localism Bill, published on 13 December 2010, made significant changes to the current arrangements governing the conduct of councillors in Wiltshire which will come into effect in Spring 2012.

Library Service Review

The Cabinet has accepted the review proposals and the implications for Bradford on Avon are that:

- all mobile library stops will continue to operate
- the library opening hours will be reduced to 40 hours per week
- new self-service technology will be introduced to improve efficiency
- volunteers will be trained and supported by library staff

Outcome of the Leisure Facilities Review

A refined proposal has been agreed by Cabinet that will enable the Council to consider the practicalities and options for campus developments in a wider strategic context, ahead of the transfer of local facilities to the community to manage.

Reducing Child Poverty Strategy Consultation

Consultation on the Wiltshire Strategy will close on 4 April, all comments welcome.

Childcare Sufficiency Assessment

Local authorities had a duty, under the Childcare Act 2006, to assess the sufficiency of childcare in their area and produce a report. Wiltshire's second report has now been drafted and it is out for consultation on the Wiltshire Council website.

Changes to Bus Services

As a result of significant reductions in local authority funding, and the Government's insistence that a high proportion of the savings are achieved in

	<p>the first year, Wiltshire Council has had to make difficult decisions in setting its budget for the 2011/12 financial year. However, due to efficiency and procurement savings of £850,000 and the use of additional income from car parking to help fund bus services, it has been possible to limit to £600,000 the amount that has to be found from making changes to bus services. This puts us in a much better situation than many of our neighbouring authorities.</p> <p>The main changes affecting the Bradford-on-Avon Community Area are;</p> <ul style="list-style-type: none"> • Reduction in the weekday evening service on route 265 (Trowbridge – Bradford – Bath) from every hour to every two hours after 7pm, and withdrawal of all Sunday evening buses after 7pm. • Withdrawal of Council funding to First bus for operating a half hourly service on route 265 between Trowbridge and Warminster. This is likely to result in the company reducing their service on this section of the route to hourly. • Reduction in the frequency of the ZigZag service (Trowbridge – Bradford – Melksham – Corsham – Chippenham) to two-hourly. • Withdrawal of service X88 which provides a Wednesday and Saturday only shoppers bus from Chitterne to Bath, via Bratton, Steeple Ashton, Hilperton and Staverton. • Withdrawal of the Thursdays only shoppers bus from Limpley Stoke village and Freshford to Bradford-on-Avon <p>A question was raised as to when the cuts would take effect. ACTION: PD to ascertain dates for all changes</p> <p>The following partner updates contained in the pack were noted:</p> <ul style="list-style-type: none"> • Wiltshire Police. • NHS Wiltshire. • Wiltshire Fire and Rescue Service.
6.	<p><u>Growing up in Bradford on Avon: issues for children and young people</u></p> <p>Damian Haasjes (Head of Voice and Influence, Youth Service, Wiltshire Council) hosted an interactive voting session, in which the young people present, including representatives of the Bradford on Avon Young Peoples' Issues Group, Bradford on Avon Youth Council and St. Laurence School Council were invited to vote on</p>

	<p>ten key questions relating to their experiences of growing up in Bradford on Avon.</p> <p>The results of this voting session are attached.</p> <p>Points made by the youth representatives included:</p> <ul style="list-style-type: none"> • Lack of decent sports pitches at the north side of Bradford on Avon. • Provision of flood lighting on the astro pitches at St Laurence School. • Too much traffic going through the centre of Bradford on Avon. • Costs of public transport too high for students to use regularly, which can mean long walks to shops and amenities. • Very important that Bradford on Avon becomes more eco-friendly. • Faster broadband connections needed. • Some concern at youths hanging around Victory Field. <p>Boards at the rear of the hall displayed general information on the work of the Childrens' Centre, Youth Centre, St Laurence School and the Extended Services Network.</p> <p>The Chairman thanked Damian Haasjes and the youth representatives for taking part in the vote and discussions that followed.</p>
7.	<p><u>Graffiti Wall Projects in Bradford on Avon</u></p> <p>Heaven Scent</p> <p>Kath Brownlee (Youth Development Co-ordinator) and representatives of the Bradford on Avon Young Peoples' Issues Group gave a short power point presentation which highlighted the work that had been carried out by the young people creating a graffiti mural project on the Heaven Scent building.</p> <p>Points made included:</p> <ul style="list-style-type: none"> • A good fun day was had by all creating the mural, with lots of positive feedback from members of the public. • The art work gave a positive message of what young people could achieve when given support and encouragement. <p>The Chairman thanked Kath Brownlee and the youth representatives for a brilliant piece of art work.</p>

	<p>Poulton Recreation Ground</p> <p>Harrison Basconnet-Ward from the Bradford on Avon Youth Council gave an update about proposals for a re-sprayable graffiti wall at Poulton Rec.</p> <p>Points made included:</p> <ul style="list-style-type: none"> • The wall would be free style with artists being able to do what they wanted on it, it was noted that any inappropriate art work would not be tolerated. • The wall would be re-painted at regular intervals for new work to be displayed. • It was thought that an art competition would be a good idea to try on the wall. <p>The Chairman thanked the Youth Council for their update.</p> <p>Display boards were placed at the rear of the hall featuring the two projects.</p>
8.	<p><u>Young Peoples' Participatory Budgeting Event</u></p> <p>The young people from the Bradford on Avon Young Peoples' Issues Group were invited by the Area Board bid for to bid for funding for youth related projects. Help was given to the groups by the Youth Development Co-ordinator, with short presentations given on each project. The audience then ranked the bids through electronic voting with funding allocated to the favoured projects.</p> <p>£4,711 was available for the youth funded projects, the total sum requested by the groups was £5,707.90.</p> <p>It was agreed that a short list of the most popular projects from a long list of seven would receive funding, these projects were:</p> <ul style="list-style-type: none"> i) Holt Youth Club (Assistant youth worker funding) - requesting £1,912.50 ii) DJ Project - requesting £1,420 iii) Football Coaching – requesting £1,200 iv) Ice Skating trip to Swindon – requesting £257.50 v) Trip to Longleat Safari Park – requesting £248.90 vi) Trip to Thorpe Park – requesting £538

vii) Trip to Parliament /a London museum – requesting £131

Results of the interactive voting

All projects were graded on value for money and quality of idea, the four most popular projects were:

1. Holt Youth Club (Assistant youth worker funding)
2. Trip to Parliament /a London museum
3. Football Coaching
4. DJ Project

Decision

- **That the Holt Youth Club (Assistant youth worker funding), Trip to Parliament /a London museum, Football Coaching and DJ Project would all receive project funding.**
- **It was also agreed that the trip to Longleat Safari Park would also receive Area Board funding.**

The results of the voting session is attached to the minutes.

The Chairman thanked all the groups for their imaginative presentations.

9.

Improvements to Recreational Spaces and Play Areas

Steve Ibbetson, the Councils Technical Manager responsible for open space and Section 106 allocations introduced himself.

Victory Field - multi use games area update

Cllr Vicky Landell Mills (Bradford on Avon Town Council) advised that this project was to be sponsored by the Town Council and would be funded by S106 contributions from the Kingston Mill development and would provide a wider scope of activities and better disabled access than currently offered at the location.

Points made from the floor included:

- Could the improvements not include a tennis practice wall.
- Is this not duplication of the plans for Barton Farm play area?
- Why had there been no input from Fitzmaurice School?

Cllr Landell Mills advised that she would feedback points made to the Town Council.

Culver Close – management issues update

Cllr Malcolm Hewson advised that he was actively trying to find a solution to the ongoing football/cricket use issues that were affecting the use of this location.

Further details would be brought to a future meeting.

Barton Farm - play area update

Alison Brown (Friends of Barton Farm Play Area) presented improvements plans for Barton Farm Play Area which she felt were complementary to those proposed for Victory Field and at a location in the town which is heavily used by children and families.

The Friends of Barton Farm play area were disappointed that there were now two schemes in competition against each other for resources. They had been unaware that there was potentially S106 funding available for their scheme and requested that some of the monies earmarked for Victory Field be shared with Barton Farm, to the benefit of the community at large.

Cllr Rosemary Brown made the point that both the Victory Field and Barton Farm Play areas should be considered as complimentary to each other and that no conflict should be encountered. This viewpoint was endorsed by Cllr Isabel Martindale, (Bradford on Avon town Mayor).

In discussion, the general feeling was the two projects should be taken forward in a mutually supportive way in order to cater for the different client groups of young people within the town. The Town Council agreed to re-consider the issue of the Section 106 funding to meet these aims.

	<p>Poulton Recreation Ground - Bike Ramps update</p> <p>Cllr Malcolm Hewson advised that the ramps were now installed, and gave thanks to everyone who had been involved to finally get this project to fruition.</p> <p>An interactive vote was carried out to find out which play area project was preferred by the attendees of the meeting - attendees could vote for either Victory Field, Barton Farm or both.</p> <p>Electronic Voting showed that 90.9% of attendees voted in support of the Barton Farm proposal and 66.7% voted in support of the Victory Field proposal, as the preferred site for play facilities.</p>
10.	<p><u>Community Area Grants</u></p> <p>The Wiltshire Councillors considered five applications to the Community Area Grants Scheme 2010/11 as follows:</p> <p>Cllr Alan Mines, (Wingfield PC) commented on behalf of the Bradford on Avon Community Area Grants Advisory Group for each application.</p> <p>Decision</p> <ul style="list-style-type: none"> • Holt Parish Council – Tannery Development Brief – awarded £2,825. The Spatial Planning Officer had requested that this be in the form of a ‘Design Guide’. The funding was granted subject to the continuing support of the Spatial Planning Department, Wiltshire Council. <p>Reason</p> <ul style="list-style-type: none"> • <i>The above application met the Community Area Grant criteria for 2010/11, and demonstrates a link to the Bradford on Avon Community Plan and Wiltshire Local Area Agreement through support to the Village Plan for Holt which is focused on the future of the Tannery site and consultation with local people through an enquiry by design process.</i> • Bradford on Avon Community Area Partnership – Come and Try it Sporting Activities – awarded £2,492. <p>Reason</p> <ul style="list-style-type: none"> • <i>The above application met the Community Area Grant criteria for 2010/11, and demonstrates a link to the Bradford on Avon</i>

Community Plan and Wiltshire Local Area Agreement by addressing the need for outdoor sports and coaching facilities and by addressing objectives on health and wellbeing and promoting active lifestyles.

- **Walkers Are Welcome Steering Group – Launch of Walkers Are Welcome Initiative – awarded £758**

Reason

- ***The above application met the Community Area Grant criteria for 2010/11, and demonstrates a link to the Bradford on Avon Community Plan by encouraging visitors, tourism and spending in the local economy as well as the promotion of healthy lifestyles and the conservation of the local landscape character.***

Cllr Malcolm Hewson hands the chair to Cllr Rosemary Brown and leaves the room.

- **Bradford on Avon Town Council – Hanging Baskets - awarded £ 2,798.
The funding was granted subject to the condition that this was a one-off payment and would not be repeated in subsequent years.**

Reason

- ***The above application met the Community Area Grant criteria for 2010/11, and demonstrates a link to the Bradford on Avon Community Plan and Wiltshire Local Area Agreement through its support to the local tourism industry, improving the appearance of the town centre and thereby encouraging expenditure in local shops and on local services.***

- **Bradford on Avon Development Trust / Bradford on Avon Town Council/ Climate Friendly Bradford on Avon – Bradford 2026 Study – awarded £7,100.
The funding was granted subject to the condition that Spatial Planning Officers and Economic Development Officers at Wiltshire Council were happy with the undertakings given by the applicant.**

Reason

- ***The above application met the Community Area Grant criteria for 2010/11, and demonstrates a link to the Bradford on Avon***

	<p><i>Community Plan and Wiltshire Local Area Agreement by providing importance evidence and parameters for the refresh of the 2005 plan, as well as addressing new areas not previously covered such as climate change.</i></p>
11.	<p><u>Performance Reward Grants</u></p> <p>The Wiltshire Councillors consider two bids to the Performance Reward Grant Scheme, as follows:</p> <p>The updated application from Bradford on Avon Town Council for Kingston Bridge.</p> <p>This application had previously been discussed by the Area Board members at its 17 March 2010 meeting. The Board had endorsed the application from Bradford on Avon Town Council for £100,000 towards the cost of the bridge.</p> <p>Updated information on the application had been provided by the Clerk of Bradford on Avon Town Council. Given that there were considered to be no material changes to the principles of the application since its submission and approval by the Bradford on Avon Area Board in March 2010 the matter was included on the agenda for information purposes only. However, recognising that this issue is an emotive one for the residents of the town, the acting Chairman allowed representations to be made from the floor on the updated application. Representations were made verbally and in writing from David Moss, Andrew Nicolson, Kate Nottage, John Seekings, Lloyd Stephens and others.</p> <p>Decision</p> <ul style="list-style-type: none"> • The Bradford on Avon Area Board noted the updated information provided by Bradford on Avon Town Council in support of the Performance Reward Grant application and also the representations made at the meeting which were largely in support of a footbridge and the principle of the PRG application but in objection to the cable stay design. The application, supported by the Bradford on Avon Area Board at its meeting in March 2010 will now be forwarded to the PRG panel for its decision as to whether the application merits funding from the scheme. <p>Cllr Malcolm Hewson now back in the chair.</p> <p>Wiltshire Police - Crime Detection through Ultra Violet scanning.</p> <p>As a joint initiative with Smart Water Technology Limited Wiltshire Police had offered members of Neighbourhood Watch schemes across the county Smart Water property marking kits at a discounted price.</p>

	<p>The purpose of this initiative was to seek funds for the purchase of UV scanning torches for issue to Police Officers on operational duties.</p> <p>Decision</p> <ul style="list-style-type: none"> • That the Bradford on Avon Area Board supports this initiative for funding of £20,000 for the purchase of UV scanning torches for issue to Police Officers on operational duties.
12.	<p><u>Meeting Evaluation</u></p> <p>The Chairman thanked everybody for attending the meeting, it was agreed that as the meeting had over-run its planned end time there would be no electronic evaluation carried out.</p>
13.	<p><u>Future Area Board Meetings</u></p> <p>The Chairman highlighted the forthcoming meetings:</p> <p>Wednesday 11th May – Holt Village Hall. NB. Subsequently changed to Cereal Partners Conference facility at Staverton.</p> <p>Wednesday 20th July – Westwood Social Club.</p> <p>Wednesday 21st September – St Margaret’s Hall.</p> <p>Wednesday 23rd November – venue to be confirmed.</p>

This page is intentionally left blank



Crime and Community Safety Briefing Paper Bradford-on-Avon Community Area Board 11th May 2011

1. Neighbourhood Policing

On Monday 4th April the structure of our Neighbourhood Policing Teams changed. The 55 NPT's in the Unitary Area have been reduced to 20 to correspond with the 20 Community Areas.

The public will not see any change to staffing levels as each Beat will retain its Community Beat Manager and Police Community Support Officer(s).

The changes have been made in order to enhance the service delivery to the public, namely...

I. Increased police visibility, community engagement and more time to spend dealing with priorities:

Due to a reduction in bureaucracy there will be a reduction in Neighbourhood Tasking Group (NTG) meetings where priorities are set each quarter. Currently up to 76 are held but in the new structure this will be reduced by 49 meetings per quarter. There is also a new NPT IT system which will make things easier and quicker for staff to enter information. There will also be one quarterly Newsletter for each Community Area with a dedicated page for each Beat Area.

II. Service delivery will be enhanced:

- a) If a significant priority is identified in a Beat Area, staff from other Beats within the NPT can be tasked to the area

to target the issue. Staff will still be primarily dedicated to working on their individual Beats.

- b) Each NPT will have a dedicated Sergeant who will provide support for the NPT and enhance supervision.

III. There will be greater partnership working with local authorities and stakeholders:

Due to the rationalisation of the number of NPTs, which will lead to improved targeting of priorities.

Current Priorities:

Up-to-date details of the current news about Neighbourhood Policing Teams, including, profiles, priorities and forthcoming community consultation events can be found on the Wiltshire Police Website.

🖥️ Visit the new and improved website at: www.wiltshire.police.uk

Team News:

There have been no team changes since the last Area Board.

2. Performance

Overall crime levels in the Community Area remain fairly static during challenging times.

The overall detection rate has improved on last year.

**Table 1 – Reported Crime Figures
1st April 2010 – 10th March 2011**

BRADFORD-on-AVON SECTOR						
TROWBRIDGE	CRIME				DETECTIONS	
	2009/10	2010/11	+ / -	% Change	2009/10	2010/11
Violence Against the Person	85	90	5	5.9%	55.3%	48.9%
Dwelling Burglary	36	42	6	16.7%	19.4%	35.7%
Criminal Damage	133	110	-23	-17.3%	9.8%	11.8%
Non Dwelling Burglary	62	81	19	30.6%	8.1%	2.5%
Theft from Motor Vehicle	46	33	-13	-28.3%	4.3%	30.3%
Theft of Motor Vehicle	17	10	-7	-41.2%	29.4%	10.0%
Total Crime	559	568	9	1.6%	21.8%	23.9%

Table 2 – Reported Anti-Social Behaviour Figures
1st April 2010 – 31st March 2011

APL-JUNE 2010 (2009)	JULY - SEPT 2010 (2009)	OCT – DEC 2010 (2009)	JAN - MAR 2011 (2010)	YEARLY AVE (10/11)
145 (167)	112 (163)	119 (127)	112 (115)	122



Cllr Paul Sample is a Member of the Wiltshire Police Authority and has the responsibility for overseeing police matters in the Community Area. He can be contacted via Wiltshire Police Authority: ☎ 01380 734022 or 🌐 <http://www.wiltshire-pa.gov.uk/feedback.asp>

3. Vision Wiltshire

Vision Wiltshire has been set-up to deliver a new policing model to meet the projected funding cuts over the next 4-years.

Wiltshire Police Authority (WPA) must reduce its budget from £108million in 2009-10 by £15million over the next four years. In order to identify where the public felt these savings might be made and what services should be protected, a special public consultation was conducted between 23rd November 2010 & 11th February 2011. There were 1,134 responses.

What did we do?

A questionnaire was posted on the WPA website which also sent to every town and parish council in Wiltshire and Swindon.

WPA Members attended Area Board meetings to present an overview of the situation and to encourage the public to express their views.

WPA Chairman, Christopher Hoare, presented similarly at meetings arranged by Wiltshire Council to consult with the public on their budget and that of partner agencies.

Neighbourhood Policing Teams distributed the questionnaire within their communities.

All Neighbourhood Watch Members and members of the public who had signed up to the Force website were alerted to the consultation.

WPA members also met with five of the six MPs in Wiltshire and Swindon to seek their views.

What you said

The conclusions that can be drawn from the results of the survey are as follows:

Many people were concerned about how public sector cuts will affect policing in their local area.

There was an overwhelming agreement that removing Police Officers and Police Community Support Officers (PCSOs) from neighbourhoods should only be done as a last resort.

85% of respondents said they would be happy with an answer rate of **up to** one minute for the non-emergency police number.

The public did not want to lose police stations and they were the primary choice for accessing police services. However, there was strong support for the use of shared facilities and of greater use of internet and telephone.

The majority of respondents agreed that we should spend the same or more than is now spent on the services we identified in our questionnaire.

WPA should be sourcing policing goods and services from others if it was more effective and efficient.

The respondents ranked the given priorities as follows:

1. Tackling crime
2. Answering 999 calls
3. Neighbourhood Policing
4. Keeping people safe
5. Being available 24/7

What we have done

The results of the consultation have been used along with a strategic assessment by Wiltshire Police to inform our Policing Plan for 2011/14. This directs policing effort as follows:

Strategic Priority 1 - Reduce Violent Crime

As part of our vision for Wiltshire to be the safest county in the Country, we are committed to further reducing violence and supporting the victims and witnesses of violent crime. Specifically,

over the next year we will focus on reducing alcohol related violence and domestic abuse and further improving our quality of service to victims of sexual abuse.

Strategic Priority 2 - Manage the people who cause the most harm in our communities

It is estimated that one in ten offenders are responsible for up to half of all crime in Wiltshire. It makes sense, therefore, to focus on those people who are causing the most harm in our communities and deal with them through an integrated approach with our partners in the justice system.

Strategic Priority 3 - Tackle Antisocial Behaviour

The level of antisocial behaviour in Swindon and Wiltshire increases in the summer. Overall levels are low and falling, and most people view Wiltshire as a safe place. The Force will be working to protect the most vulnerable and to support the communities within Wiltshire to develop and implement their own solutions to local problems

Strategic Priority 4 - Developing Sustainable Policing

The scale of the cuts requires a wholesale review of what the police do and how they do it. This means a re-focus on the core role and a much keener focus upon productivity and resource usage. Minor adjustments to the operating model will not allow us to maintain performance whilst reducing cost. WPA has agreed the development of a new operational policing model, supported by new technology. To minimise risk that comes with change, we will introduce the new operational model gradually, ensuring that each component is properly consulted upon and tested before implementation.

For the full report on the WPA ***Vision Wiltshire*** public consultation or for a full copy of the ***Policing Plan*** visit the WPA website at: www.wiltshire-pa.gov.uk

In June, WPA will publish its review of the performance of Wiltshire Police during 2010/11, and we will look to update the Area Board shortly thereafter.



David W Cullop
Sector Inspector

28/04/11

This page is intentionally left blank



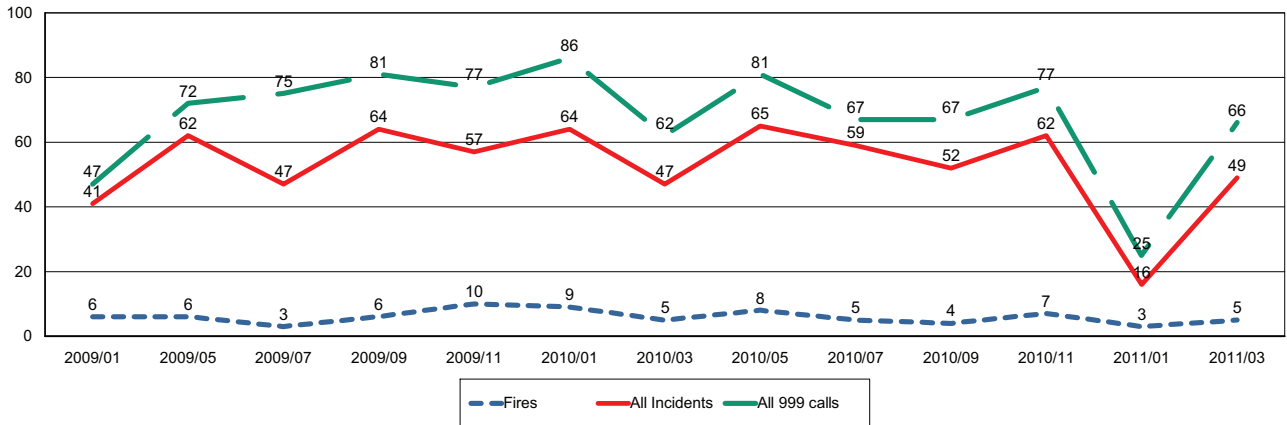
Wiltshire Fire & Rescue Service

Wiltshire and Swindon Fire Authority

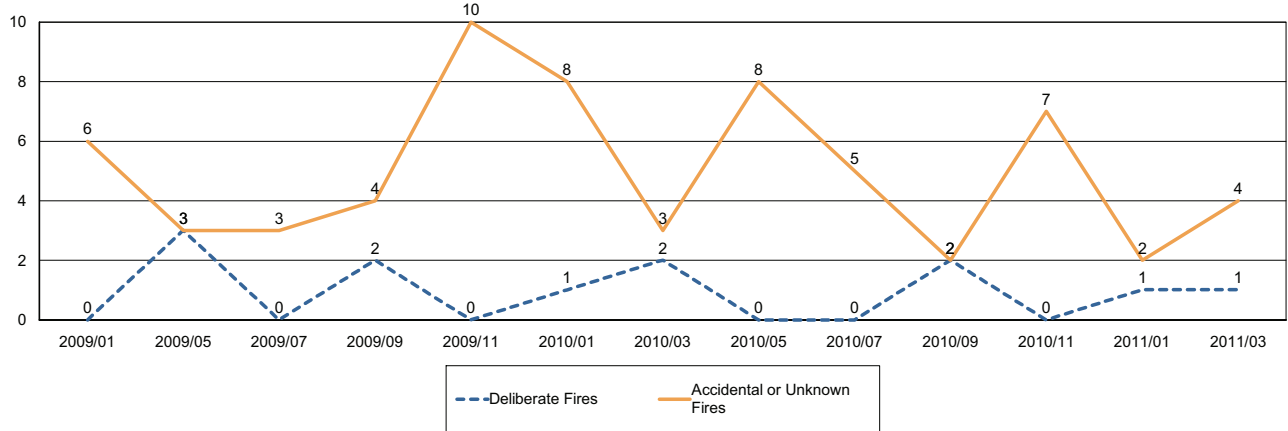
Report for Bradford on Avon Area Board

The following is a bi-monthly update of Fire and Rescue Service activity up to and including March 2011. It has been prepared by the Group Manager for the Board's area.

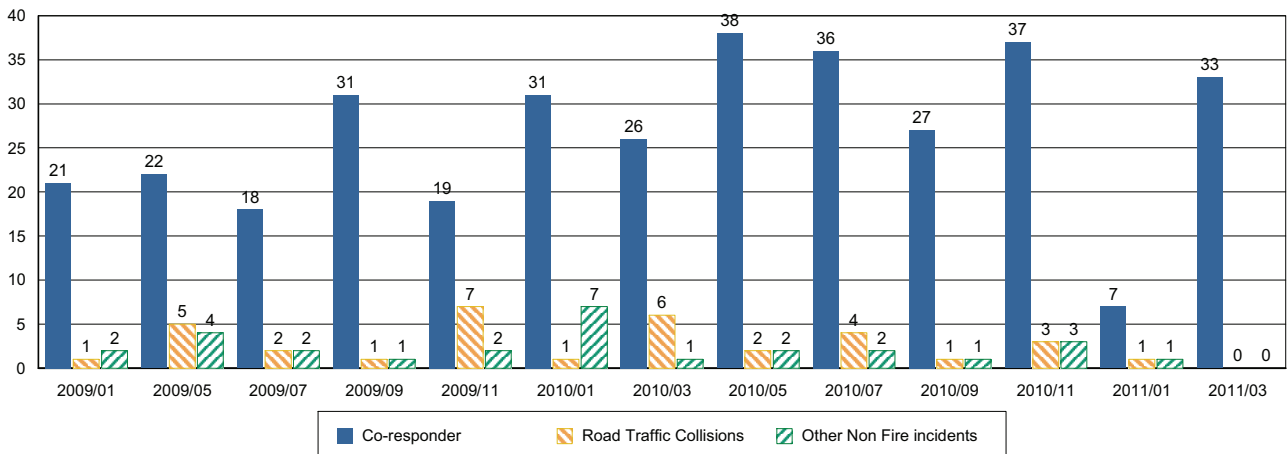
Incidents and Calls



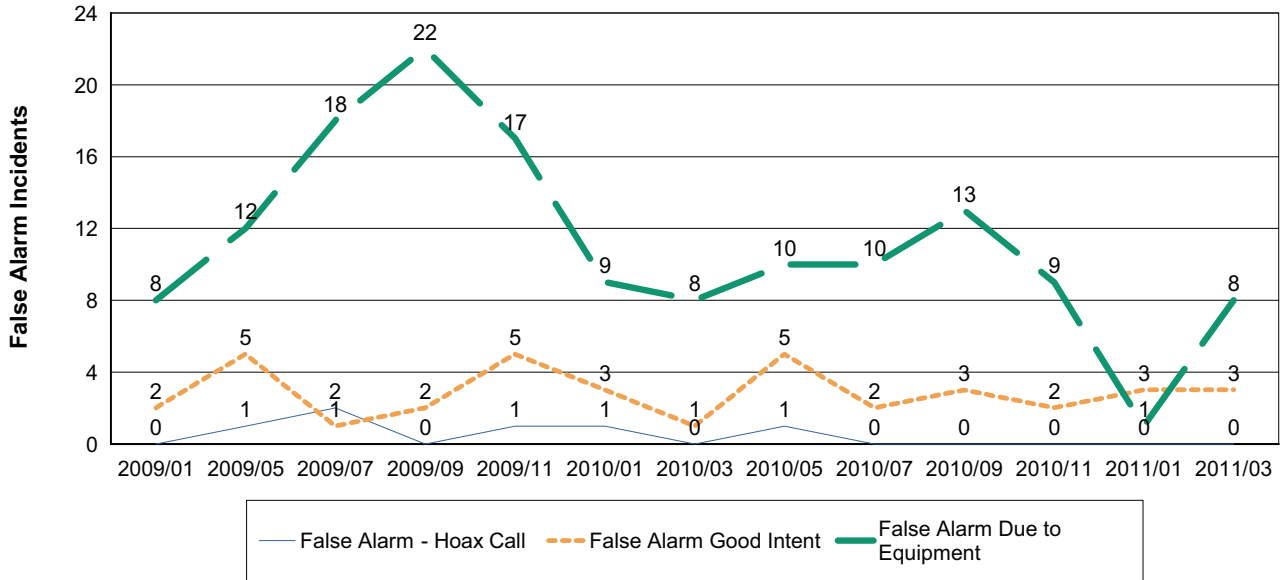
Fires by Cause



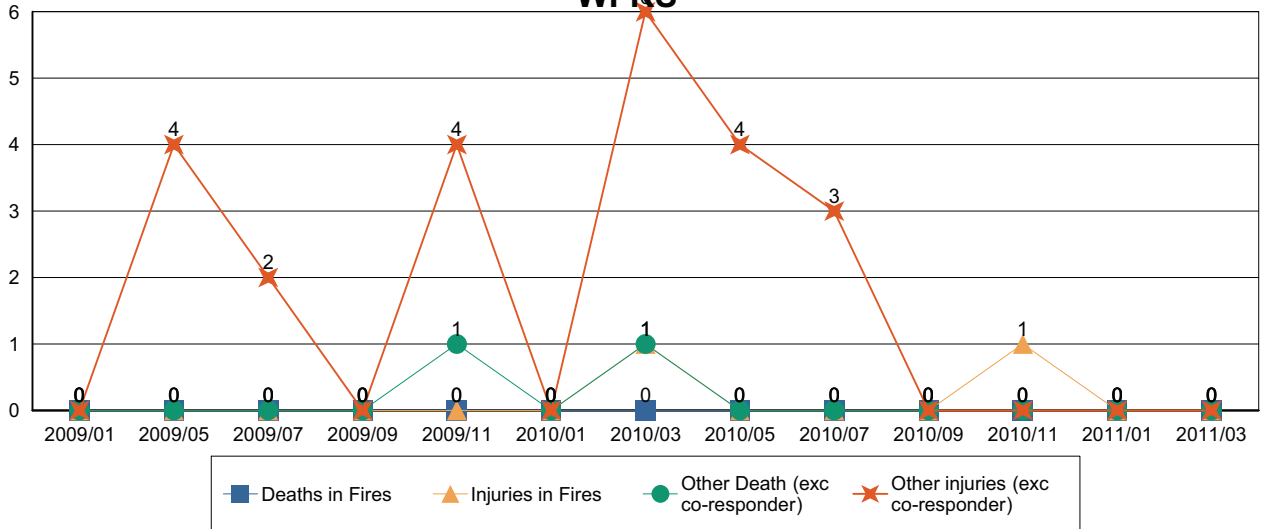
Non-Fire incidents attended by WFRS



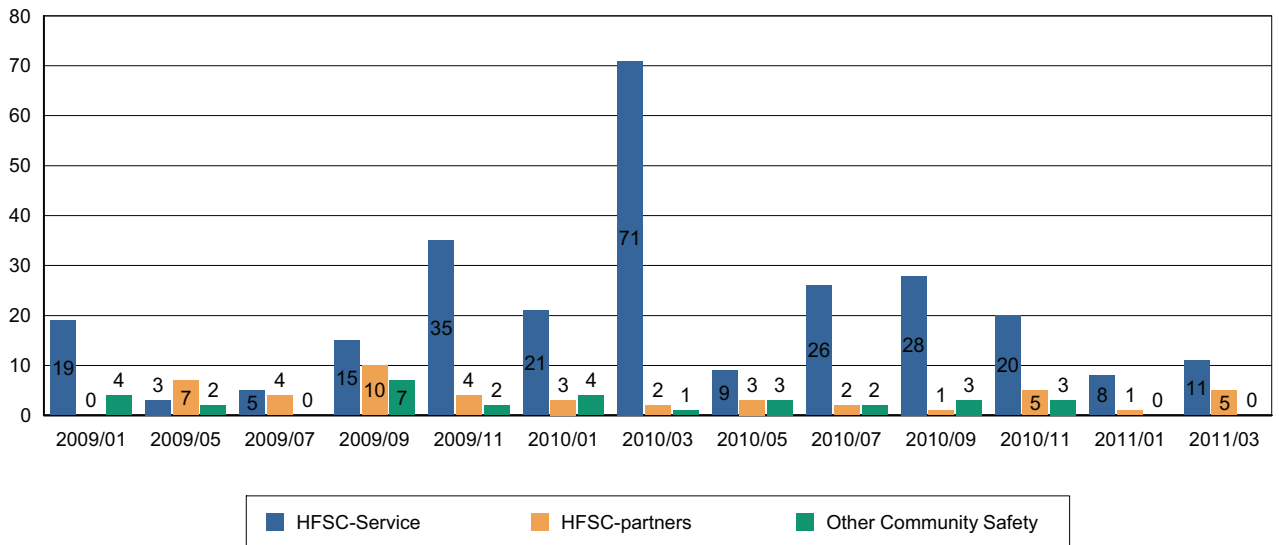
Number of False Alarm Incidents



Death & Injuries in incidents attended by WFRS



Home Fire Safety Checks and other domestic safety



Comments and Interventions overleaf

Report for Bradford on Avon Area Board – May 2011

Fires

WFRS attended 2 accidental fires during the months of March and April 2011. These involved a house fire and a tree falling on to a transformer.

There was one deliberate fire involving refuse. WFRS continues to work with Wiltshire Police and other agencies to identify persons who are responsible for deliberate fire setting.

Injuries

There were 3 injuries for this period that were sustained in the house fire.

RTC'S

We attended 1 Road Traffic Collision on the B3109 Bradford Leigh. One person was injured.

Co-Responder Calls

WFRS have responded to 27 co-responder calls over this period.

Community Safety

Take care with your barbecue!

With two Bank Holiday weekends approaching, and a forecast of good weather, this year's barbecue season has started early. Wiltshire Fire & Rescue Service wants everyone to enjoy the sunshine in safety, so please follow this simple advice if you break out the barbecue over the coming weeks:

- Keep young children well away from the barbecue.
- Keep a bucket of water, sand or a garden hose handy in case of emergency.
- Stand portable barbecues on an even surface and make sure they are away from the house, fences or shed.
- Don't place the barbecue on dry grass or vegetation.
- Use only approved lighter fuels - never petrol or paraffin.
- Make sure you never smoke around any fuel source.
- Lighter fuels must only be applied before lighting.
- Make sure matches are extinguished before disposing of them.
- Remember to light your charcoal an hour before you start cooking.
- Don't be over generous with the charcoal.
- Be careful with fatty foods and never pour oil onto meat when it is cooking.
- Make sure alcohol doesn't affect your ability to act safely whilst cooking.
- Never pour petrol on any barbecue to try and re-ignite it – start the process again.
- After you have finished cooking, extinguish the burning coals. DO NOT dispose of the embers into a wheelie bin or other container until you are completely sure they are cold.
- Make sure the controls and cylinder valves of a gas barbecue are turned off before you store it away. Store your cylinder in a well ventilated area and check connections for leaks.

For more Community Safety information please visit www.wiltsfire.gov.uk for more information.

This page is intentionally left blank

NHS Update – May 2011

New Cardiac Rehabilitation Service in Chippenham

NHS Wiltshire is launching a new Cardiac Rehabilitation service in Chippenham this month as part of a continuing programme to improve access to cardiac rehabilitation and physical activity classes across the county.

Building on the success of nurse-led classes in Westbury, Cardiac Rehabilitation classes will be provided weekly at the Olympiad Leisure Centre in Chippenham for eligible cardiac patients who are registered with a Wiltshire GP. The programme takes place over nine weeks and depending on their condition, Chippenham patients will have the choice of participating either at The Royal United Hospital, Bath or at the Olympiad.

The aim of the community Cardiac Rehabilitation service is to provide all patients who meet the referral criteria with a service which improves their ability to exercise, vastly improving a person's quality of life and minimising the risk of heart attacks in the future. The rehabilitation exercises are designed to support adult patients who have been discharged from hospital but who are continuing to live with heart disease. Structured exercise training, as well as continuing educational and psychological support and advice are key components of the service. The nurse-led cardiac rehabilitation classes provide a link for people to then attend other cardiac rehabilitation opportunities available at Wiltshire's leisure centres.

Prime Minister and Health Secretary announce a two month pause on plans

The Government's Health Select Committee has made 50 recommendations to the Health and Social Care Bill 2011 and as a consequence the Department of Health has announced a 'pause' as the Bill moves through the House of Commons. The Government will conduct a 'listening exercise' consultation and set up the NHS Future Forum to channel the thoughts and opinions of patient representatives, doctors, nurses and NHS leaders back to Government. The engagement process will focus on four main areas: choice and competition, patient involvement and patient accountability, clinical advice and leadership and education and training. For more information and to get involved please go to: <http://healthandcare.dh.gov.uk/category/conversations/listening-exercise-conversations/>

Next NHS Wiltshire Board Meeting

The next Board meeting of NHS Wiltshire will be held on **Wednesday 18 May at 10am - 2011 at Southgate House**. Members of the public are welcome to attend. Papers are published a week before the meeting on www.wiltshire.nhs.uk or on request from Stacey Saunders, NHS Wiltshire (tel: 01380 733839, email: stacey.saunders@wiltshire.nhs.uk). For further information or copies of documents referred to above, please email communications@wiltshire.nhs.uk

This page is intentionally left blank

Agenda Item 6

Agenda Item No.6

STAVERTON VILLAGE

Staverton is a small village on the outskirts of Trowbridge and Hilperton with a population of around 1,100 residents. Over the last 20 years property developers have increased the size of the village by two thirds, completely reshaping the landscape of the marina with its accompanying boatyard.

The Kennet and Avon Canal is the boundary between Hilperton and Staverton and provides a breathtaking scenic walk to either Bradford on Avon or Devizes. At weekends the canal towpath is heavily populated with cyclists and pedestrians. Near the boatyard various canal boats are moored during the winter and this marina leads to a small lagoon which is home to many species of wildlife including swans, ducks, moorhens and Canada geese. Residents around this lagoon are very protective of the swans when they are nesting and regularly set up watch groups. This magnificent setting provides a constant source of photographs for our excellent, much envied, Staverton Newsletter.

Nestle`s, now renamed Cereal Partners, has evolved over the years and is one of the most modern processing plants in Europe, manufacturing most of the "Shredded Wheat and Shreddies" for the UK and European market. It supplies the vast distribution store based near the Melksham bypass. The factory sits well by the river and is a popular landmark providing jobs in the community.

The village boasts an excellent pub called The Old Bear, a riding school, a church, 3 schools, 3 small playgrounds, a private members club, convenience store, dentist, restaurant and a take away. In view of the size of the new development, Persimmon Homes was obliged to fund leisure facilities to the community, which have provided a superb sports ground, a new sports pavilion and multi purpose hard court.

Staverton has become a more diverse community with the influx of young families. Therefore it has become even more important that enough leisure facilities are provided for these members of the community.

The railway line which divides the village was completed on 2nd September 1848, however Staverton Halt was not opened until 1906, later to be permanently closed.

A recent archeological dig off New Terrace prior to laying the footings for the latest building development, uncovered the earliest residents of Staverton, who turned out to be two roman skeletons.

It may be a small village but there is a great deal of interesting historical features within its boundaries.

This page is intentionally left blank

Agenda Item No.7

Digital Inclusion and Superfast Broadband Across Wiltshire

Wiltshire Council is investing in digital inclusion and access to super-fast broadband to support homes and business throughout the county.

Currently not all parts of Wiltshire have the same access to broadband. This is due to the fact that Wiltshire is a large rural county and it is uneconomic in some areas to supply broadband and the next generation superfast broadband to homes and businesses. Around 5% of all households currently receive a poor service with very slow broadband speeds and over half of all premises are unlikely to receive superfast broadband by 2015. It means if nothing is done a significant number of residents and businesses will find it increasingly difficult to take advantage of the internet and the wide range of on-line services available.

Wiltshire Council has recognised the importance of broadband access and has decided to invest £16m in improving access to digital services in areas which would otherwise miss out. This investment along with government grant and additional investment from the telecoms industry will generate over £30m of funds. It is intended this will go a long way towards eliminating the so called 'digital divide' across communities. The council has set a target of 85% and possibly rising to 95% (pending government funding) of all premises to have superfast broadband availability by 2015.

But supporting superfast broadband access is only one part of the Council's wider digital inclusion project.

In 2010, over 30 million or 60% of all adults in the UK accessed the internet nearly every day and yet nearly 20% of the population have never used the internet. Being on-line and using technology is becoming an increasingly regular and important factor, for work, learning or recreational use. Good digital literacy skills and access to technology allows us to benefit in many different ways such as saving money through on-line shopping and paying bills. Access to the internet allows businesses to develop the use of on-line communications, publicity and sales and can be particularly important in rural locations.

Objectives

The digital inclusion project has three objectives which together form a strong basis to support a wide range of other initiatives especially in promoting economic growth, tackling social disadvantage, and in achieving a low carbon society.

They are:

1. To improve access to broadband for citizens and businesses in Wiltshire.

All premises within Wiltshire to have access to a minimum broadband service of 2Mbps achieving the Government's goal to ensure delivery of Standard Broadband to virtually all

communities in the UK. A minimum of 85%, (possibly 95%) of premises will be able to access the higher performing next generation superfast broadband access by 2015.

This will achieve:

- Much faster internet access which will improve peoples 'experience' of the technology and increase their opportunities to participate in social networking, using streamed media, video conferencing, online banking and shopping, local government services. This has many knock-on effects and benefits which could include for example, reducing people's social isolation, providing telecare and telehealth for the elderly, saving money, minimising the need to travel.
- For businesses it allows increased use of on-line tools, improves communication and marketing to customers, and greater flexibility in working location. It can help business viability especially for small-medium sized firms and overcome the disadvantage of being located in more remote rural areas.
- The Council will also benefit, as it will allow its staff to work more effectively from home or community based locations, reducing the need for costly central office premises.

2. To increase the uptake and usage of council on-line services.

The council's website presence will be developed further to improve its capability to offer a wider range of interactive on-line services. Promotion will also be undertaken to increase demand and take up of our on-line services.

This will achieve:

- Improved delivery of local services and communication with residents, which will provide 24-7 access. The demand for on-line council services will be increased, allowing staff to spend more time on more complex issues and cases requiring their expertise. It will offer the potential to make efficiency savings eg in transactional services and could increase the income received by the council.
- Support for the uptake of free web based productivity and communication resources to allow new or unconfident users to have access to a digital "toolbox" of resources.
- Improving the information available to the public about the range of connectivity services available across Wiltshire that would help to make better informed choices.

3. To ensure that everyone has the opportunity to become digitally literate and confident users of technology.

Communities will be supported through the use of volunteers to provide hands on support for digital literacy. Small and medium businesses will also be supported through economic partnerships to make the best use of technology including on-line purchasing and communications.

This will achieve:

- More adults being able to use technology and the internet, with fewer feeling 'digitally excluded', especially amongst the elderly and those on low incomes. It can also help people in getting jobs, as most employers now require digital skills.

- More demand for internet access and services, especially superfast broadband connectivity.
- To ensure that every adult has the opportunity to become digitally literate and confident users of technology. (Phased in conjunction with the superfast broadband rollout in each area)
- A volunteer programme will be established (schools, local community groups and business) that will offer a menu of support and also work with Area Boards to identify specific needs and opportunities for support linked to opportunities arising from localism projects and to the customer focus programme. (Phased in conjunction with the superfast broadband rollout in each area)
- Support from business to provide skills around day-to-day use of technology e.g. “how to do on-line banking”, “how to do the weekly shop on-line” will be supported through partnership with local business and Race On-Line 2012 (<http://raceonline2012.org/>) to provide digital literacy support at the workplace.

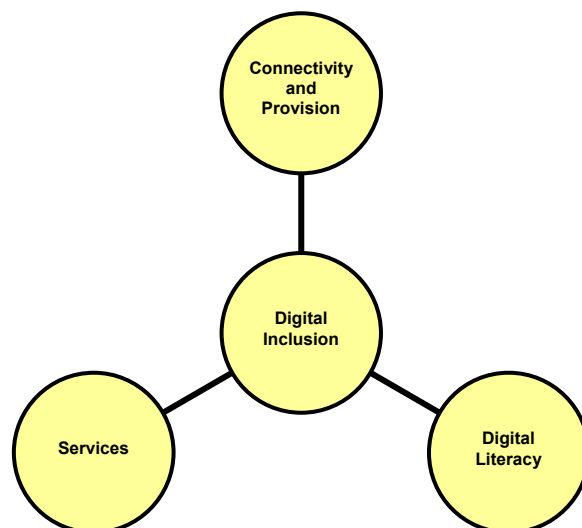
How will the areas be selected and prioritise for support? Firstly, to ensure that the telecoms market is not distorted in Wiltshire, funding to improve the infrastructure can only be provided in areas where it’s not economically viable for the industry to fund any upgrades, i.e. where superfast broadband is not planned for rollout. A range of data for all these communities within Wiltshire will be collected, for example the number of businesses, number of household, employment and housing opportunities.

Timescales

The project aims and funding was approved by full council as part of the business plan and financial plan in February 2011 and is one of the council’s key areas for investment.

Support for digital literacy will start in pilot phase this summer. A procurement will be managed during 2011-12 so to allow rollout from April 2012 of superfast broadband

The digital Inclusion project’s three objectives are complementary and together form a strong basis to support growth in the economy, social inclusion and educational outcomes.



Background

Broadband connectivity

Broadband coverage and performance in Wiltshire is poor particularly when compared with more urban councils. There are significant cost challenges for the telecoms market to provide higher speed broadband connectivity. Often the smaller towns and villages are not commercially viable for short term improvement over the next five years. Approximately 59% of premises across Wiltshire will not benefit from superfast broadband as they are in areas where it is uneconomical for the telecoms industry to invest. Without some form of direct public and community intervention they will continue to receive an inadequate service.

Detailed research is underway to map broadband coverage and performance and this will be combined with other information on potential demand and socio-economic factors to pinpoint the localities where additional investment is needed. The council will use this intelligence to develop a proposal to invest in broadband and enter into a contract with the telecoms industry to upgrade the infrastructure in these areas. In this way, the council can ensure that it targets resources so that the majority of communities in Wiltshire are able to access super fast broadband services by 2015.

It will work closely with communities and all partners such as area boards, economic communities and social enterprises.

Some key facts and issues include:

- 5% of households in Wiltshire cannot receive broadband speeds of at least 2mbps. High broadband speeds are really only readily available in the larger towns.
- Small and medium sized businesses are likely to be more successful and grow more quickly if they have good internet access and presence. In fact a number of surveys have shown that many small businesses report that they would not exist without the internet.
- The lack of computer and internet access can contribute to social disadvantage, especially for the unemployed, elderly, and those with disabilities.

Public on-line services

The council's website is well positioned to be developed further to improve the range and scope of services that can be accessed on-line. The focus will be on making the top 20 most requested services fully transactional, providing real time information, and in tailoring information and services to where users live. This will have many benefits for both the council and users including cost efficiencies, and choice and ease of access at any time of day or night.

The website will also be used to promote this project, outlining progress and how to get involved. It will be interactive and include broadband speed calculators, surveys and digital literacy support available.

Broadband usage and demand

The use of technology can have huge social and economic benefits. However, a large number of people, approximately 65,000 in Wiltshire, especially in certain groups, do not use the internet due to a variety of reasons which may include cost, limited awareness of its benefits, or a lack of knowledge in how to use the technology.

Area boards, schools, libraries, volunteer groups and local communities will be critical partners to help engage with people wishing to gain digital literacy skills. This will link closely to the improvements to connectivity.

Some key facts and issues include:

- Around 60% of all people in the UK access the internet every day. But 19% of the population has never used the internet. In Wiltshire this equates to about 68,000 people. These people are increasingly disadvantaged. For example, it is estimated that people who do not use the internet miss out on £560 savings per year in shopping and paying bills online
- Most new jobs require digital skills.
- Access to computers at home can improve children's learning and makes it easier for parents to get involved in their child's education.

Links to the national agenda and other council projects

Digital inclusion and improving access to broadband is a national and local priority forming a part of the coalition government programme, the Wiltshire Community Plan, and the Wiltshire Council Business Plan 2011-15.

The government has set national digital connectivity targets and is channelling its work and investment through Broadband Delivery UK (BDUK). It supports many government initiatives including for example, supporting the goal to ensure the country has the best Superfast Broadband in Europe by the end of this parliament (2015) and also; to ensure delivery of standard broadband to virtually all communities in the UK within the lifetime of this parliament (2015). The digital inclusion project also has strong links to the achievement of the big society, improvements to public sector efficiency, and open government with the publication of more on-line information.

Locally the digital inclusion project helps to support the achievement of many other initiatives both within the council and in our work with other partner agencies.

- Considerable work is ongoing to protect and promote business development and investment in Wiltshire. The need for good broadband connectivity is becoming increasingly important for business success.
- The customer focus programme aims to change the way customers access our services, with the default that 'we go to the customer' and not 'the customer comes to us'. This means having appointments in people's homes and other community

settings plus the use of virtual face to face facilities in each community area. Superfast broadband will be a prerequisite to make this work allowing access to centrally held information and data.

- The campus and operational delivery programme will reduce the number of council offices and other buildings across Wiltshire. It means more staff will work remotely from home and in other community settings which will require fast and reliable broadband access.
- Protecting and safeguarding vulnerable adults is another area of investment for the council. This will be achieved through increasing services that help people to live independently in their own homes. The use of telecare and internet based technology will be a vital tool in this work, with active monitoring of patient conditions and virtual face to face consultations. However, it all relies on having a good broadband infrastructure in place, especially in rural areas.
- The Local development Framework and the production of the new Wiltshire Core Strategy will seek to ensure all new developments include broadband connectivity.
- A range of energy efficiency projects are underway to reduce carbon emissions from homes and businesses. Technology and access to the internet is helping to do this, reducing commuting and the need to travel and in new internet based products such as smart meters which help to monitor and reduce home energy usage.

For more information please contact ian.baker@wiltshire.gov.uk

Agenda Item 11a)

Bradford on Avon Area Board - Community Area Grant Scheme

End of Year Summary 2010/11 – Key Statistics

Budget and Expenditure

Grants Budget	£ 47, 075 + £ 5, 122 carried forward from 2009/10
Total Project Expenditure	£ 40, 090
Total Value of Projects	£ 137, 487 representing a leverage of x3.4 matching funding
Total Unspent	£ 12, 142 carried forward into 2011/12

Range of Projects Supported

Sports – youth football goals; outdoor cricket nets; equipment for junior rowers; new 'Back to Netball' club; contribution to sports court; launch of Walkers are Welcome; 'Come and Try It' sporting activities.

Youth – graffiti mural; youth access/transport projects

Town Centre – hanging baskets; Christmas lights

Community engagement and consultation – core costs of community partnership, village development brief, spatial planning strategy

Distribution of Grant Support

Bradford on Avon – 8 applications funded totalling £ 18, 446

Holt – 2 applications funded totalling £ 7, 825

Limpley Stoke – no applications funded

Monkton Farleigh – no applications funded

South Wraxall – no applications funded

Staverton – 1 application funded totalling £ 694

Westwood – no applications funded

Wingfield – no applications funded

Winsley – 1 application funded totalling £ 2,500

Community Area Wide – 2 applications funded totalling £ 10, 425

Scheme Review for 2011/12

The Area Board Community Area Grant's criteria have been reviewed following the second year of operation and some minor changes have been incorporated to streamline the application process and to place a greater emphasis on encouraging applications from the community and voluntary sector. The revised application forms and guidance are now available to download at www.wiltshire.gov.uk/areaboards and should be used for all applications in 2011/12.

The revised guidance makes it clearer that applications in respect of annual 'running costs' for which any organisation has an ongoing financial responsibility are ineligible for funding.

Area Boards will not consider applications from Town and Parish Councils for purposes that relate to their statutory duties or powers and that should be funded from the local town/parish precept. However this does not preclude bids from Town and Parish Councils which support community projects that provide new opportunities for local people or those functions that are not the sole responsibility of the Town or Parish Council.

Grants Advisory Group

The Grants Advisory Group meets ahead of each Area Board meeting to consider any Community Area Grant applications and to provide comments to the Community Area Manager for his report on the applications. These comments are reported to the Area Board meetings and form part of the consideration of grant matters by the elected councillors.

The GAG, although consultative, is felt to be a useful sounding board for the discussion of applications and provides some comfort that issues have received proper scrutiny prior to grant decisions being made by elected members at the Area Board meetings.

The GAG is made up of interested representatives of the parish councils in the community area. Its current membership is Bil Bailey (Limpley Stoke Parish Council), Matthew Midlane (Monkton Farleigh Parish Council), Terry Biles (Westwood Parish Council) and Alan Mines (Wingfield Parish Council). To ensure inclusion and transparency, it is suggested that the membership of this group should be re-nominated at the same time as the re-election of the Chairman and Vice Chairman of the Area Board and representatives on outside bodies in July 2011.

Recommendations

- i) The end of year summary report for 2010/11 be noted
- ii) The scheme review for 2011/12 be noted, in particular the stricter interpretation of funding eligibility to Town and Parish Councils given their precepting powers
- iii) The Grants Advisory Group be re-nominated at the July 2011 meeting of the Area Board

Peter Dunford, Community Area Manager for Bradford on Avon – April 2011

BRADFORD ON AVON AREA BOARD

Budget Type	Carry Forward 2009/10	
Community Area Grants	£5,122	

PROJECTS

Budget Code 30610

GL Account 460010

Page 39

Name of Applicant	Project	Committee Approval Date	Deadline for Drawing Down Funds (1 year on from approval date)
Staverton Sports Football Club	Purchase of new youth football goals	21-Jul-10	21-Jul-11
Winsley Cricket Club	Purchase of outdoor cricket nets	21-Jul-10	21-Jul-11
Bradford on Avon Rowing Club	Purchase of equipment for junior rowers	22-Sep-10	22-Sep-11
Bradford on Avon Chamber of Commerce	Installation of Christmas lights	24-Nov-10	24-Nov-11
Beejays Netball Club	Setting up of a new 'Back to netball' club	24-Nov-10	24-Nov-11
Holt Sports & Recreation Committee	Construction of a second sports court	24-Nov-10	24-Nov-11
Community Area Partnership	CAP funding	24-Nov-10	

BOA Youth Development Heaven Scent Project	Produce artwork created by young people from the community	19-Jan-11	19-Jan-12
BOA Walkers are Welcome	Launch of Walkers are Welcome initiative	16-Mar-11	16-Mar-12
BAO Community area partnership	Come and Try It sporting activities	16-Mar-11	16-Mar-12
BOA Development Trust	Bradford 2026 Study	16-Mar-11	16-Mar-12
Holt Parish Council	Tannery Development Brief project	16-Mar-11	16-Mar-12
Bradford on Avon Town Council	Hanging baskets in town	16-Mar-11	16-Mar-12
BOA youth development	Additional funding for youth projects	16-Mar-11	

Budget for 2010/11	Total Budget 2010/11	Balance
£47,110	£52,232	£12,142.00

Page 41

Amount Committed	Date Signed Condition Form Returned	Cheque Paid	Running Balance	Evaluation Form/ Receipt Received/ Date
£694	29/7/10	emailed finance 29 July 2010	£51,538	
£2,500	9/3/11	payment processed 9 March 2011	£49,038	
£3,388	11/10/11	emailed finance 11 October 2010	£45,650	
£1,500	6/12/10	emailed finance 7 December 2010	£44,150	
£560	7/2/11	emailed finance 9 February 2011	£43,590	
£5,000	14/4/11	payment processed 14 April 2011	£38,590	
£7,933		emailed finance 9 December 2010	£30,657	

£2,340	3/2/11	emailed finance 4 February 2011	£28,317	01-Mar-11
£758	30/3/10	payment processed 30 March 2010	£27,559	
£2,492	31/3/11	payment processed 4 April 2011	£25,067	
£7,100	14/4/11	payment processed 14 April 2011	£17,967	
£2,825			£15,142	
£2,798	19/4/11	payment processed 19 April 2011	£12,344	
£202		funding transferred	£12,142	
			£12,142	
			£12,142	
			£12,142	
			£12,142	
			£12,142	
			£12,142	
			£12,142	

Powers and duties of parish councils

Function	Powers & Duties	Statutory Provisions
Access land	Power to enforce byelaws made by another authority	Countryside and Rights of Way Act 2000, s. 17
Allotments	Duty to provide allotments. Power to improve and adapt land for allotments, and to let grazing rights	Small Holdings & Allotments Act 1908, ss. 23, 26, and 42
Baths and washhouses	Powers relating to provision of public baths, washhouses and bathing huts	Public Health Act 1936, ss. 221 - 223 and 225 - 227
Burial grounds, cemeteries and crematoria	Power to acquire and maintain Power to provide Power to agree to maintain monuments and memorials Power to contribute towards expenses of cemeteries	Open Spaces Act 1906, Ss 9 and 10; Local Government Act 1972, s. 214; Parish Councils and Burial Authorities (Miscellaneous Provisions) Act 1970, s. 1 Local Government Act 1972, s. 214(6)
Bus shelters	Power to provide and maintain shelters	Local Government (Miscellaneous Provisions) Act 1953, s. 4
Bye-laws	Power to make bye-laws in regard to pleasure grounds Cycle parks Baths and washhouses Open spaces and burial grounds Mortuaries and post-mortem rooms Public Conveniences	Public Health Act 1875, s. 164 Road Traffic Regulation Act 1984, s.57(7) Public Health Act 1936, s.223 Open Spaces Act 1906, ss.15 and 12 Public Health Act 1936, s.198 Public Health Act 1936, s. 87
Clocks	Power to provide public clocks	Parish Councils Act 1957, s.2
Closed churchyards	Powers as to maintenance	Local Government Act 1972, s.215
Commons	Power for parish council to contribute to expense relating to scheme for the regulation and management of a common	Commons Act 1899, s.5
Common pastures	Powers in relation to providing common pasture	Smallholdings and Allotments Act 1908, s.34
Conference facilities	Power to provide and encourage the use of facilities	Local Government Act 1972, s.144
Community centres	Power to provide and equip buildings for use of clubs having athletic, social or recreational objectives	Local Government (Miscellaneous Provisions) Act 1976 s.19
Crime prevention	Powers to install and maintain equipment and establish and maintain a scheme for detection or prevention of crime	Local Government and Rating Act 1997, s.31
Drainage	Power to deal with ponds and ditches	Public Health Act 1936, s.260
Entertainment and the arts	Provision of entertainment and support of the arts	Local Government Act 1972, s.145
Financial assistance	Duty to require information	Local Government Act 1972, s.137A
General powers	Power to incur expenditure for certain purposes	Local Government Act 1972, s. 137
Gifts	Power to accept	Local Government Act 1972, s.139
Highways	Power to maintain footpaths and bridleways Power to light roads and public places Provision of litter bins Powers to provide parking places for bicycles and motor-cycles, and other vehicles Power to enter into agreement as to	Highways Act 1980, ss.43,50 Parish Councils Act 1957, s.3; Highways Act 1980, s.301 Litter Act 1983, ss.5,6 Road Traffic Regulation Act 1984, ss.57,63 Highways Act 1980, ss.30,72 Parish Councils Act 1957, s.1

	dedication and widening Power to provide roadside seats and shelters Consent of parish council required for ending maintenance of highway at public expense, or for stopping up or diversion of highway Power to complain to highway authority as to unlawful stopping up or obstruction of highway or unlawful encroachment on roadside wastes Power to provide traffic signs and other objects or devices warning of danger Power to plant trees and lay out grass verges etc. and to maintain them	Highways Act 1980, ss.47,116 Highways Act 1980, s.130 Road Traffic Regulation Act 1984, s.72 Highways Act 1980, s.96
Investments	Power to participate in schemes of collective investment	Trustee Investments Act 1961, s.11
Land	Power to acquire by agreement, to appropriate, to dispose of Power to accept gifts of land	Local Government Act 1972, ss.124, 126, 127 Local Government Act 1972, s.139
Litter	Provision of receptacles	Litter Act 1983, ss.5,6
Lotteries	Powers to promote	Lotteries and Amusements Act 1976, s.7
Mortuaries and post mortem rooms	Powers to provide mortuaries and post mortem rooms	Public Health Act 1936, s.198
Open spaces	Power to acquire land and maintain	Public Health Act 1875, s.164 Open Spaces Act 1906, ss.9 and 10
Parish documents	Powers to direct as to their custody	Local Government Act 1972, s.226
Public buildings and village hall	Power to provide buildings for public meetings and assemblies	Local Government Act 1972, s.133
Public conveniences	Powers relating to provision of public conveniences	Public Health Act 1936, s.87
Recreation	Power to acquire land for or to provide public walks, pleasure grounds and open spaces and to manage and control them Power to provide gymnasiums, playing fields, holiday camps Provision of boating pools	(see Local Government Act 1972, Sched.14 para.27) Public Health Act 1875, s.164 Public Health Acts Amendment Act 1890 s.44 Open Spaces Act 1906, ss.9 and 10 Local Government (Miscellaneous Provisions) Act 1976, s.19 Public Health Act 1961, s.54
Town and country planning	Right to be notified of planning applications	Town and Country Planning Act 1990, Sched.1, para.8
Tourism	Power to encourage visitors and provide conference and other facilities	Local Government Act 1972, s.144
Traffic calming	Powers to contribute financially to traffic calming schemes	Highways Act 1980, s.274A
Transport	Powers in relation to car-sharing schemes, taxi fare concessions and information about transport Powers to make grants for bus services	Local Government and Rating Act 1997, s.26, 28 and 29 Transport Act 1985, s.106A
War memorials	Power to maintain, repair, protect and alter war memorials	War Memorials (Local Authorities' Powers) Act 1923, s.1; as extended by Local Government Act 1948, s.133
Water supply	Power to utilise well, spring or stream and to provide facilities for obtaining water from them	Public Health Act 1936, s.125

Report to	Bradford on Avon Area Board	Agenda Item No.11
Date of Meeting	11 May 2011	
Title of Report	Community Area Grants	

Purpose of Report

To ask Councillors to consider 2 applications seeking 2011/12 Community Area Grant Funding:

- 1. Staverton Parish Council – new footpath in play area in School Lane to give access to disabled persons in wheelchairs and to parents with prams to access a swing suitable for disabled children - requesting £ 980**

The officer recommendation is that the application is refused as ineligible under the new grants criteria for 2011/12, which does not allow for the funding of local projects for which town and parish councils have the statutory duty and powers to fund through the Precept.

- 2. Bradford on Avon Arts Festival 2011 - requesting £ 1, 500**

The officer recommendation is that a reduced sum of £ 1, 175 is awarded to the Bradford on Avon Arts Festival 2011 to reflect the ineligibility of contributions towards cash prizes and contingency costs. As this is an annual event and recurring expenditure cannot be supported, this would need to be a one-off funding contribution.

1. Background

- 1.1 Area Boards have authority to approve Community Area Grants under powers delegated to them by the Deputy Leader and Cabinet member for Community Services (27 February 2010). Under the Scheme of Delegation Area Boards must adhere to the Area Board Grants Guidance for funding.
- 1.2 In accordance with the Scheme of Delegation, any decision of an Area Board that is contrary to the funding criteria and/or the officer's recommendation would need to demonstrate that the application in question has a wider community benefit, and give specific reasons as to why this should justify an exception to the criteria.
- 1.3 In accordance with the Area Board Grants Guidance, officers are required to provide recommendations in their report, however the decision to support applications and to what level is made by Wiltshire Councillors on this Area Board.
- 1.4 Bradford on Avon Area Board has been allocated a budget in 2011/2012 of £47,110 for community grants, community partnership core funding and councillor led initiatives. The carry forward from the 2010/2011 budget is £12,142. This gives a total budget of £59,252 for the 2011/2012 financial year. It will not be possible for unspent monies at 31/03/12 to be rolled forward into the budget for the 2012/13 financial year.
- 1.5 It has been decided that paper copies of funding applications will no longer appear as part of the agenda in an attempt to reduce the volume of paper used. However, the application forms will be available on the Wiltshire Council website and hard copies will be available upon request.
- 1.6 The 2011/2012 funding criteria and application forms are available on the Council's website (www.wiltshire.gov.uk/areaboards) and paper versions are available from the Community Area Manager.

Background documents used in the preparation of this Report	<ul style="list-style-type: none">• Community Area Grant Application Pack 2011/12• Bradford on Avon Community Area Plan• Wiltshire Local Area Agreement• Report of Grant Advisory Group• Technical Officer reports
--	---

2 Main Considerations

- 2.1 Councillors will need to be satisfied that grants awarded in the 2011/12 year are made to projects that can realistically proceed within a year of the award being made.
- 2.2 There will be 6 rounds of funding during 2011/12, this being the first round.

3 Environmental & Community Implications

3.1 Community Area Grants will contribute to the continuance and/or improvement of cultural, social and community activity and wellbeing in the community area, the extent and specifics of which will be dependent upon the individual project.

4 Financial Implications

4.1 Awards must fall within the Area Boards budget allocated to the Bradford on Avon Area Board.

4.2 If grants are awarded in line with officer recommendations, Bradford on Avon Area Board will have a balance of £ 58,077 remaining in the grants budget for the 2011/12 financial year.

5 Legal Implications

5.1 There are no specific legal implications related to this report.

6 HR Implications

6.1 There are no specific HR implications related to this report.

7 Equality and Inclusion Implications

7.1 Community Area Grants give all local community and voluntary groups an equal opportunity to receive funding towards community based projects and schemes.

7.2 Implications relating to individual grant applications are outlined within section 8 – “Officer Recommendations”.

8 Officer Recommendations

Ref	Applicant	Project proposal	Funding requested
8.1	Staverton Parish Council	New footpath in play area in School Lane to give access to disabled persons in wheelchairs and to parents with prams to access a swing suitable for disabled children	£ 980

- 8.1.1 This application was submitted in March 2011 and would have been eligible under the former rules. However it falls foul of the revised community area grant criteria for 2011/12, approved by the Cabinet and introduced as of 1st April 2011, which does not allow for the funding of local projects which the Parish Council has the statutory duty to fund through its precepting powers.
- 8.1.2 The applicant was advised verbally of the likelihood of this rule change at the time of application and has submitted a statement to explain that the Parish Council has a very small precept of approximately £ 20,000 in 2011/12 most of which is spent on the Clerk's salary and other Council outgoings. The pavilion building costs ran over budget by £ 26,000 and the running costs are also depleting Parish Council reserves as income from hiring the sports field is insufficient to cover these costs. The Parish Council did increase its Precept last year to help with the overspend on the pavilion but did not feel justified in increasing the Precept for 2011/12 in view of the financial constraints felt by residents in the present climate.
- 8.1.3 The application demonstrates a link to the Bradford on Avon Community Plan and Wiltshire Local Area Agreement through its aim to provide access to modern play facilities for all, including the disabled and low income families.
- 8.1.4 Members of the Grants Advisory Group have commented that no matching funding, volunteer labour or fundraising efforts have been demonstrated by the applicant. They see this as a core parish project and therefore not eligible for funding under the new eligibility criteria. The GAG recommend refusal of this application, their full comments are available in an appendix to this report.
- 8.1.5 The project will provide a new footpath from the main entrance gate continuing down to the rear of the play area which will be landscaped and fitted with a bench. Access to most of the equipment in this play area is limited by the uneven surface. The completion of the play area will provide modern play facilities which have been lacking in Staverton for many years – without this pathway its full use will be denied to a deserving section of the community. A quotation of £ 980 + VAT has been received for this work.

The officer recommendation is that the application is refused as ineligible under the new grants criteria for 2011/12, which does not allow for the funding of local projects for which town and parish councils have the statutory duty and powers to fund through the Precept.

Ref	Applicant	Project proposal	Funding requested
8.2	Bradford on Avon Arts Festival	Bradford on Avon Arts Festival 2011	£ 1, 500

8.2.1 This application meets the community area grant criteria for 2011/12, although contributions to cash prizes (£ 350) and to contingency funds (£ 300) are not deemed to be eligible expenditures. This would need to be one-off funding contribution towards what is an annual event.

8.2.2 The application demonstrates a link to the Bradford on Avon Community Plan and Wiltshire Local Area Agreement through its contribution to community cohesion; to cultural development; to tourism development; to activities for young people; and to community volunteering.

8.2.3 Members of the Grants Advisory Group are generally supportive of the initiative but agree that contributions to cash prizes and for contingency funds would not be eligible and they have also requested clarification on the other sources of funding for the event. Their full comments are available in an appendix to this report.

8.2.4 The Arts Development Officers is supportive of the project, her comments are in the appendix.

8.2.5 The project is an annual event, voluntary and non-profit-making, which aims to affirm, enable and enhance 'community' while highlighting the abundance of artistic talent through an all-inclusive community event. Now in its seventh year, the festival has grown year on year as people meet up with friends, build connections and enjoy and appreciate the vibrancy of the community. The costs include erecting staging, PA system, awning in case of inclement weather and printing of literature.

The officer recommendation is that a reduced sum of £ 1, 175 is awarded to the Bradford on Avon Arts Festival 2011 to reflect the ineligibility of contributions towards cash prizes and contingency costs. As this is an annual event and recurring expenditure cannot be supported, this would need to be a one-off funding contribution.

Appendices:	Grant applications from: Staverton Parish Council Bradford on Avon Arts Festival Report from the Grants Advisory Group together with comments from Arts Development Officer		

No unpublished documents have been relied upon in the preparation of this report.

Report Author	Peter Dunford, Community Area Manager Tel: 01225 713060 E-mail peter.dunford@wiltshire.gov.uk
----------------------	--

Bradford on Avon Area Board – 11 May 2011

Agenda Item 11 B) – Appendix 1

Note of Grants Advisory Group held on 28 April 2011

Present: Bil Bailey, Limpley Stoke Parish Council
Matthew Midlane, Monkton Farleigh Parish Council
Alan Mines, Wingfield Parish Council
Peter Dunford, Bradford on Avon Community Area Manager (secretary)

Apologies: Terry Biles, Westwood Parish Council

Community Area Grant Scheme - End of Year Summary Report and Scheme Review for 2011/12

PD outlined the key statistics for 2010/11 in terms budget expenditure, leverage of matched funding, monies rolled-forward, the range of projects supported and the distribution of grant support per parish.

PD then outlined the review of the scheme for 2011/12 financial year. The Area Board will now not consider applications from Town and Parish Councils for purposes that relate to their statutory duties or powers to fund local projects through the Precept. However this does not preclude bids that support community projects that provide new opportunities for local people or those functions that are not the sole responsibility of the Town or Parish Council. These changes have been approved by the Cabinet of Wiltshire Council and became operative as of 1st April 2011.

There was some feeling that the scheme criteria continues to lack clarity and remains too woolly. The changes will mean that the Community Area Manager will have to exercise increasing levels of judgement as there are still significant 'grey areas' of eligibility. Regret was expressed that the review of the scheme had been carried out without prior consultation with the area boards.

PD suggested that the membership of the Grants Advisory Group be subject to re-election in July 2011 and thereafter on an annual basis. The group members were supportive of this.

Community Area Grant Applications:

- i) Staverton Parish Council – £ 980 sought to install a footpath in a play area to give access to disabled persons in wheelchairs and to parents with prams to access a swing suitable for disabled children
 - No matching funding, volunteer labour or fundraising efforts demonstrated

- Footpaths should be put forward through the CAT-G highways prioritisation scheme for funding
- The Parish Council has overspent on other projects and sees the Community Area Grant as an opportunity to raise funding
- Considered to be a core parish council project and therefore not eligible under the new rules: **the Grants Advisory Group recommend refusal**

ii) Bradford on Avon Arts Festival - £ 1, 500 sought for Bradford on Avon Arts Festival 2011

- The Advisory Group was generally supportive of this initiative
- Clarification sought on other sources of funding - from Bradford on Avon Town Council, Co-operative Community Fund, Colonel Llewelyn Palmer Educational Trust and local businesses – are they secured/ what elements are they funding ? *Response from applicant to clarify that the Town Council funding has contributed to the costs of ticket printing, banner printing, website maintenance and liability insurance; other sources of funding not yet secured.*
- Contributions to cash prizes (£ 350) and for contingency funds (£ 300) would not be eligible, reducing the eligible project costs to £ 2, 350
- **The Grants Advisory Group recommend funding of £ 1,175 be awarded, being 50 % of the revised eligible project costs. As this is an annual event and recurring expenditure cannot be supported, this would need to be a one-off funding contribution**

Comments received from Arts Development Officer

The Bradford on Avon Arts Festival is a community based event and well supported. My understanding is that a public meeting was held recently and a number of new people joined the steering committee, bringing with them new ideas to the festival. This indicates to me that the festival is very much welcomed in the town and it's great to know that there are volunteers working hard to pull it together.

There is no funding allocation in the 2011/12 Wiltshire Council arts budget for the 2011 festival and no application has been received from the festival to the arts project grant scheme. As far as I am aware, there is nothing to indicate that the Board shouldn't support the festival.

Peter Dunford, Community Area Manager for Bradford on Avon - April 2011